



LodiUK

**DIGRAIN**

**BUGSTER EC**

**INSECTICIDE**



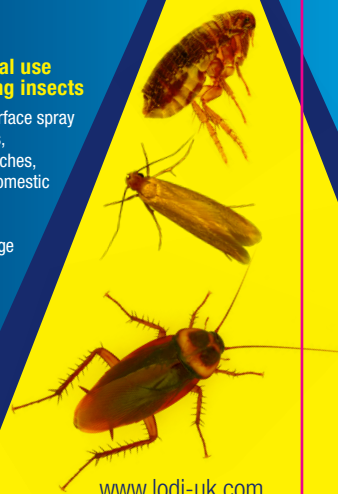
Suitable for  
application by  
fogging or as a  
surface spray

Contains:  
Prallethrin 2% w/w  
Cypermethrin 10% w/w

**Insecticide for professional use  
against flying and crawling insects**

Application by fogging or as a surface spray for use against wasps, flies, fleas, mosquitoes, moths, ants, cockroaches, beetles & red mites. For use in domestic locations (including kitchens), hospitals (with the exception of occupied rooms), factories, storage sheds, hotels, restaurants, public or municipal buildings, ships (but not in contact with unprotected foodstuffs) shelters, garages, inside livestock buildings (barns, stables, dairies & treatment rooms).

**1 Litre**



[www.lodi-uk.com](http://www.lodi-uk.com)



## HOW TO USE THIS PRODUCT:

SCAN THIS CODE ON YOUR  
PHONE CAMERA OR VISIT  
[WWW.LODI-UK.COM/GUIDES](http://WWW.LODI-UK.COM/GUIDES)



Insecticide for professional use against flying and crawling insects such as wasps, flies, fleas, mosquitoes, moths, ants, cockroaches, beetles & red mites. For use in domestic locations (including kitchens), hospitals (with the exception of occupied rooms), factories, storage sheds, hotels, restaurants, public or municipal buildings, ships (but not in contact with unprotected foodstuffs), shelters, garages, inside livestock buildings (barns, stables, dairies & treatment rooms). This product cannot be used on porous surfaces, clothing, bedding or plants.

Its composition allows a rapid knock-down associated with a remanence of at least 12 weeks.

### Instructions for use

-**Surface treatment** : Against crawling insects, the product should be applied where insects can be found, namely along skirting boards, pipes, the corners of walls, cupboards, below devices that generate heat (kitchens, bathrooms, toilets), etc. against ants, the product should be applied to locations visited by ants, around the nest or sprayed over the anthill.

Against flying insects, the product should be applied where insects can be found, namely on windows, door frames, beams and walls.

Against wasps, spray the nest and places where they can be found.

In the case of regular use, the product must first be diluted 200 times in water (for example, 25 ml/5 litres of water) before being applied in quantities of 5 litres of liquid per 100m<sup>2</sup>. In the case of substantial infestations, double the dose (for example, 50 ml/5 litres of water) before applying in quantities of 5 litres of liquid per 100m<sup>2</sup>. For wasps, this concentration of liquid should be used.

Leave the building 30min to 2h before reentry.

-**Fogging treatment**: Only for inside use.

Cold fogging : The product must be diluted 100 times in water (50 ml in 5L for 500m<sup>3</sup>)

Hot fogging : The product must be diluted 200 times in water (25ml in 5L for 500m<sup>3</sup>)

Leave the building sealed for 4-6 hours after treatment.

Authorization HSE No. 10831

FOR USE ONLY BY PROFESSIONAL OPERATORS

Users must comply in full with all their legal responsibilities under the Control of Pesticides Regulations 1986 (as amended), including complying with all Conditions of Approval.



Biocide – PT18 (insecticide)

EC – Emulsionable concentrate

**WARNING!** H410 - Very toxic to aquatic life with long lasting effects. P273 - Avoid release to the environment. P391 - Collect spillage. P501 - Dispose of contents and container to hazardous or special waste collection point, in accordance with local regulation.

## BUGSTER EC

Insecticide

2% w/w prallethrin (CAS 23031-36-9)

10% w/w cypermethrin (CAS 52315-07-8)

Precautions to avoid risks to people and the environment. Keep cages and pet birds at a distance when applying. Prevent the spray from coming into contact with people, animals or ornamental plants. Do not let foodstuffs or their raw materials come into contact with treated surfaces unless these have been washed thoroughly. Cover foodstuffs, raw materials and household utensils when applying. Do not apply to or inside devices intended for processing or preparing foodstuffs or condiments. Do not spray the liquid directly on the moving parts of machines, electric motors and switches. Avoid applying in close proximity to aquariums and ponds, and contaminating any water likely to come into contact with fish. Avoid letting the product, the remaining spray or rinse water pollute surface and groundwater. Unused surplus must be taken to an approved waste treatment centre. To avoid risks to man and the environment, comply with the instructions for use. The COSHH (Control of Substances Hazardous to Health) Regulations 2002 (as amended) apply to the use of this product at work.

OPERATORS MUST WEAR SUITABLE PROTECTIVE CLOTHING (COATED COVERALLS) AND SUITABLE PROTECTIVE GLOVES WHEN HANDLING THE CONCENTRATE OR APPLYING THE PRODUCT. WHERE BREATHING A FOG OR MIST CANNOT BE AVOIDED DURING SPACE TREATMENTS, WEAR SUITABLE RESPIRATORY PROTECTIVE EQUIPMENT (SEE HSE GUIDANCE BOOKLET HS (G) 53: "RESPIRATORY PROTECTIVE EQUIPMENT - A PRACTICAL GUIDE FOR USERS"). ALL BATS ARE PROTECTED UNDER THE WILDLIFE AND COUNTRYSIDE ACT 1981. BEFORE TREATING ANY STRUCTURE USED BY BATS, CONSULT NATURAL ENGLAND, SCOTTISH NATURAL HERITAGE OR THE COUNTRYSIDE COUNCIL FOR WALES. HAZARDOUS TO BEES. DO NOT APPLY DIRECTLY TO LIVESTOCK AND POULTRY. DO NOT CONTAMINATE FOODSTUFFS, EATING UTENSILS OR FOOD CONTACT SURFACES. DO NOT APPLY TO CLOTHING OR HUMAN BEDDING. COLLECT EGGS AND REMOVE FEED, EXPOSED WATER AND MILK BEFORE APPLICATION. EXCLUDE ALL PERSONS AND ANIMALS DURING TREATMENT. UNPROTECTED PERSONS AND ANIMALS SHOULD BE KEPT AWAY FROM TREATED AREAS UNTIL SURFACES ARE DRY. WASH HANDS AND EXPOSED SKIN before meals and after use. This material and its container must be disposed of in a safe way. KEEP IN A SAFE PLACE. Protect milk machinery and milk containers from contamination. FOR INDOOR USE ONLY. ACTION SHOULD BE TAKEN TO PREVENT FORAGING BEES GAINING ACCESS TO TREATED NESTS, PREFERABLY BY REMOVING THE COMBS OR BLOCKING THE NEST ENTRANCE. Avoid excessive contamination of coveralls. NOT TO BE USED ON PET BEDDING, PET SLEEPING QUARTERS OR WHERE PETS FREQUENTLY LIE. COVER ALL WATER STORAGE TANKS before application. Ventilate the building before reentry.

### Notes

This product contains pyrethroids. When using, they may have possible side effects including irritation and allergies of the skin and a particular sensation (mainly on the face) which begins 1/2 hour to 1 hour after exposure. This consists of a tingling, burning sensation and the absence of sensation (hypoesthesia). On very rare occasions, delayed dyspnoea, fever and coughing may occur. This reaction is temporary and does not require treatment. As its efficacy may depend on a combination of factors, the effects of which are not always predictable (soil, meteorology, variety, etc.), we shall not be liable for reduced efficacy or damage. Care: symptomatic treatment. Contact a poison control centre for further treatment at hospital. Storage: Keep the product in its original, closed packaging, in a cool, dry place.

UFI: JSSF-M3D5-WW3N-8DWC Batch number, expiry date > see packaging Volume : 1L



**Safety Data Sheet available on request**

Distributed by: LODI UK, Building 69, Pensnett Trading Estate, Kingswinford, West Midlands, DY6 7FD  
Tel: 01384 404242 Email: sales@lodi-uk.com  
www.lodi-uk.com

Authorization holder: ARMOSA TECH SA, Rue des Tuiliers 1, 4480 Engis, Belgium www.armosa.eu